



**Prevent corrosion like this!**

**Specially Developed Proprietary Coating System to Replace Galvanizing**



**ADVANCE PRODUCTS & SYSTEMS**

**GAL-VO-PLAST<sup>®</sup>  
WALL SLEEVES**

**For Better Durability & Longer Life**



# Gal-vo-plast® Wall Sleeves- New standard coating to replace galvanizing

Two wall sleeves with two different types of protective coatings were submitted for testing at an independent lab. This test consisted of a 500-hour exposure test (equal to two years) in a B 117 salt fog chamber. This test has been used to a considerable extent for the purpose of comparing different materials and finishes.

One sample had hot dipped galvanized coating and the other had Gal-vo-plast® coating. The coatings were of uniform thickness and showed good adhesion.

After testing, the submitted wall sleeves were removed from the salt fog chamber for visual examination.

The visual examination revealed no indications of oxidation on any of the exposed surfaces of the Gal-vo-plast® coating. Figure 3 shows the Gal-vo-plast® coated wall sleeve after testing.

The visual examination revealed considerable oxidation of the galvanized coating on all exposed surfaces. Figure 4 shows the galvanized wall sleeve covered with white zinc oxide.



Figure 1: Gal-vo-plast® Wall Sleeve submitted for testing



Figure 2: Galvanized Wall Sleeve submitted for testing

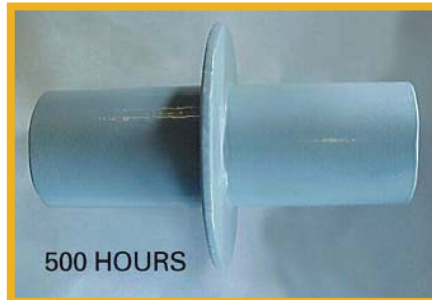


Figure 3: Gal-vo-plast® Wall Sleeve after 500 hours of exposure

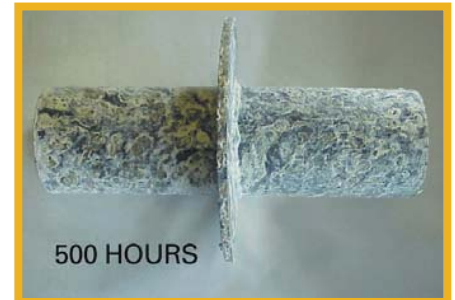


Figure 4: Galvanized Wall Sleeve after 500 hours of exposure

## Gal-vo-plast® Wall Sleeves vs. Galvanized Wall Sleeves

### Gal-vo-plast®

- More durable
- Faster availability, especially for custom wall sleeves
- Longer installation life
- All coating performed in-house
- Considerably more economical

Copies of testing are available upon request.

### Galvanizing

- Does not resist corrosion as long
- Custom wall sleeves usually require an additional two weeks to galvanize
- More expensive
- Must be sent out of factory to be galvanized

Standard length in stock is 12". Also available in shorter and longer lengths.

## STEEL WALL SLEEVES

NOMINAL SIZE	SLEEVE I.D.
2"	2.067"
2 1/2"	2.469"
3"	3.068"
3 1/2"	3.548"
4"	4.026"
6"	6.065"
8"	7.981"
10"	10.020"
12"	12.000"
14"	13.250"
16"	15.250"
18"	17.250"
20"	19.250"
22"	21.250"
24"	23.250"
26"	25.250"
28"	27.250"
30"	29.250"
32"	31.250"
34"	33.250"
36"	35.250"
40"	39.250"
42"	41.250"

Larger sizes are available up to 120".

- **Low Cost**
- **Fast Delivery**
- **Non-Hazardous**



## PLASTIC WALL SLEEVES

NOMINAL SIZE	SLEEVE I.D.
2"	2.067"
3"	3.068"
4"	3.998"
5"	5.016"
6"	6.031"
8"	7.943"
10"	9.976"
12"	11.890"
14"	13.072"
16"	14.940"
18"	16.808"
20"	18.863"
24"	22.540"
30"	30.746"
36"	36.798"
42"	Call Factory
48"	Call Factory



### APS Wall Sleeves provide:

- Quality Assurance
- Unlimited Sizes
- Customized To Order
- Corrosion Resistant
- Easy Installation
- Fast Turn-around

APS wall sleeves are available in plastic, stainless steel and carbon steel. The standard length is 12"; longer and shorter lengths are available. Steel wall sleeves are available in sizes from 2" to 120" diameter.

Protect your investment and use APS wall sleeves with water stops to provide a better seal than a core drilled hole. In the absence of wall sleeves, mechanical/utility piping vibration can cause costly wall damage. In addition, wall sleeves make it easy to repair piping without damaging the wall.

### Advance Products & Systems offers four types of wall sleeves:

1. **Model GPWS** made of steel with a welded steel water stop; Gal-vo-plast® coating
2. **Model GWS** made of steel with a welded steel water stop; galvanized
3. **Model SWS** made of steel with a welded steel water stop; primed
4. **Model PWS** made of plastic with a welded plastic water stop

## TO ORDER:

- Material
- Nominal Sleeve Size
- Length of Sleeve or Wall Thickness
- Position of Water Stop

## OTHER QUALITY PRODUCTS AVAILABLE

- Innerlynx® - Wall/Pipe Penetration Seals and End Seals
  - Casing Spacers
  - U-Bolt Cote®
- Flange Isolating Gasket Kits
  - Safety Spray Shields
  - Foreman Night Caps
- Kleerband® Flange Protectors



## ADVANCE PRODUCTS & SYSTEMS, INC.

P.O. Box 60399  
Lafayette, Louisiana 70596-0399  
(800) 315-6009  
(337) 233-6116 • fax (337) 232-3860  
e-mail: sales@apsonline.com  
website: www.apsonline.com  
Made in the U.S.A.

### DISTRIBUTED BY:

COM. Y DISTR. PATAGON TEC LIMITADA

Fono 56 (2) - 2957 1700  
SANTIAGO — CHILE

EMAIL : VENTAS@PATAGONTEC.CL

[WWW.PATAGONTEC.CL](http://WWW.PATAGONTEC.CL)



Advance Products & Systems, Inc. is not responsible for errors printed in this brochure.  
Wall sleeves are custom manufactured and not returnable.